



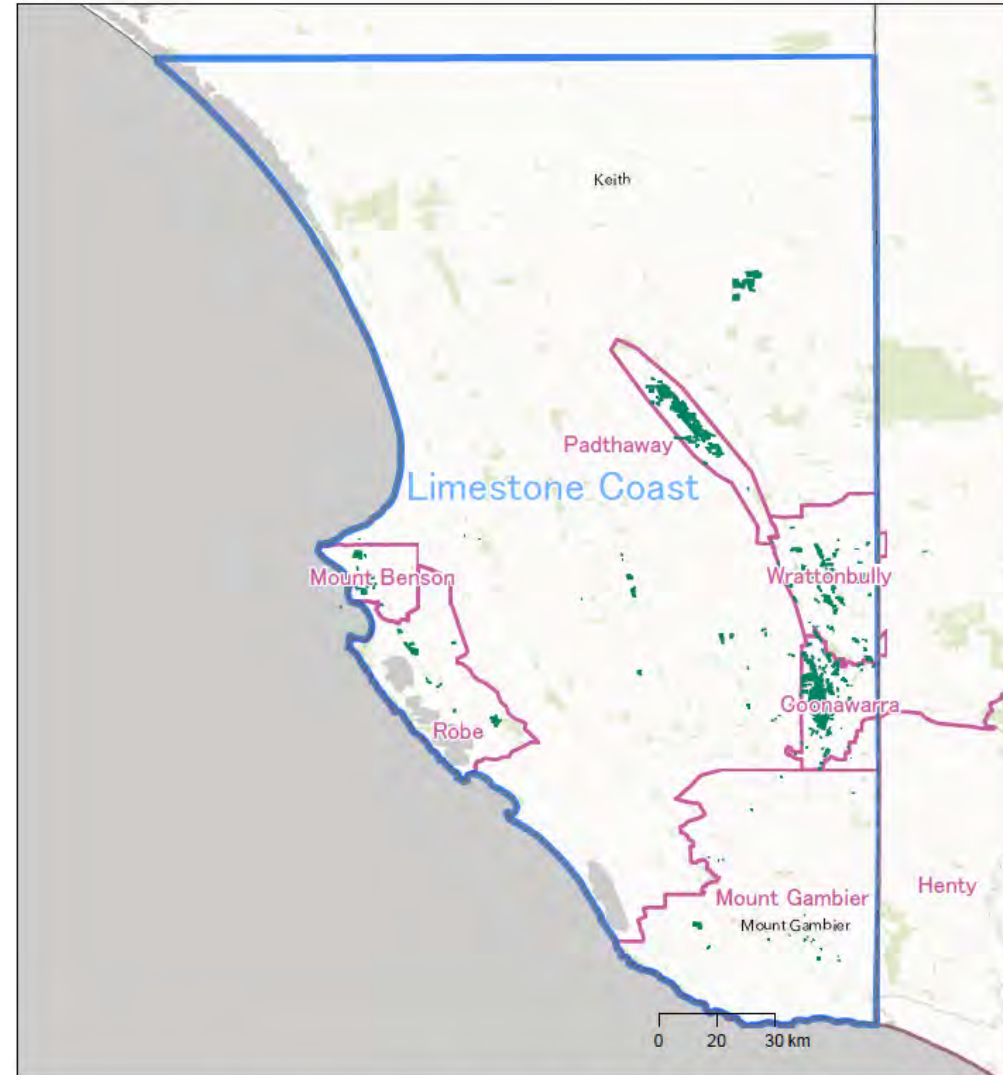
National Vintage Survey 2020

GI Summary Report

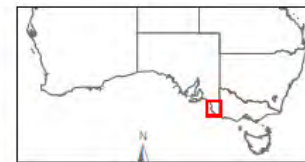
Limestone Coast zone

Wine Australia August 2020

The Limestone Coast zone includes the GI regions of Coonawarra, Mount Benson, Mount Gambier, Padthaway, Robe and Wrattontully, and the vineyards in the Limestone Coast zone but outside any declared GI regions – mainly around Bordertown, Lucindale, and Beachport (see map opposite). The total area of vines included in the Limestone Coast is 15,846 hectares.



Copyright in this map is owned by Wine Australia July 2019
 Vineyard boundaries created and supplied by GAIA for the National Vineyard Scale 2019. Visit www.gaia.gov.au for more information. This information is reproduced with the permission of GAIA. Inventions Copyright in this map is owned by Wine Australia July 2019
 Geographic Indications (GI) boundaries Wine Australia (including South Australia) where they are provided with permission of the relevant GI owner. For details of GI boundaries visit www.wineaustralia.gov.au
 All other geographical data is the property of the relevant authority. Where not stated otherwise, the information is the property of the relevant authority. Where not stated otherwise, the information is the property of the relevant authority.
 This map is provided as a guide only. It is not intended to be used for any other purpose. The data must not be shared with commercial third parties without written consent from Wine Australia. More information can be found at www.wineaustralia.gov.au
 Map produced by Location Solutions Pty Ltd, June 2019



Legend
 Vineyards (GAIA 2019)
 GI Regions

This map provides a visual representation of the Geographical Indication (GI) boundary defined in the national legislation for the GI. The actual boundaries in the field are those of the GI and in case of any discrepancies or overlaps, the field boundaries prevail.

Limestone Coast

Summary snapshot

VINEYARD AREA 2020

15,846 hectares

REPORTED CRUSH 2020

66,434 tonnes

Share of export volume by GI (YE June 2020)

Coonawarra	35%
Limestone Coast	32%
Padthaway	19%
Wrattonbully	10%
Mount Benson	2%
Others	2%

Top five varieties in 2020 (share by crush volume)

Cabernet Sauvignon	38%
Shiraz	25%
Chardonnay	12%
Merlot	7%
Sauvignon Blanc	5%
Others	13%

Top five export markets by volume (YE June 2020)

China, PR	46%
United Kingdom	14%
Canada	8%
United States of America	7%
New Zealand	5%
Others	20%

Limestone Coast

Vintage overview

VINTAGE REPORT – LIMESTONE COAST

The 2020 vintage in Coonawarra can be characterised by small quantities of high quality fruit.

The season began well with ideal soil moisture due to good rainfall between May and September. Coonawarra has been very fortunate not to have been affected by the bush fires that occurred throughout the Australian 2019/2020 summer.

Across the region, yields are reportedly down due to a cool Spring; however, the fruit is looking fantastic – small berries, great fruit concentration and lovely tannins.

Across the region, whites were picked in March, with the first of the reds coming off the vines late March to the beginning of April.

Warm days and cool nights provided the perfect ripening conditions for Coonawarra's signature variety, Cabernet Sauvignon, which was harvested in mid-April. The average picking date across the Coonawarra wine region is 15 April and – at time of writing - many are out in the vineyards harvesting with vintage expected to be complete by the end of April.

The 2020 Coonawarra vintage has been free of disease, drought, and smoke taint.

The wines at this early stage are looking excellent and 2020 will be a vintage to watch out for!

Coonawarra Vignerons Board (Coonawarra Grape and Wine Incorporated), April 2020

OVERVIEW OF VINTAGE STATISTICS

The 2020 Limestone Coast recorded crush was 66,434 tonnes, a 45 per cent decrease compared with 2019.

Over the last 5 years (2015-2019), the average Limestone Coast reported production has been 107,278 tonnes, with a low of 80,607 tonnes in 2018. The 2020 crush was 38 per cent below the 5-year average and lower than the 2018 crush.

There were 66 respondents to the survey who reported crushing grapes from the Limestone Coast in 2020, compared with 59 in 2019. This increased number indicates that the change in crush is primarily a reflection of the season, not a drop in the response rate.

57 per cent of winegrapes crushed from the Limestone Coast zone were winery-grown, with 43 per cent purchased from independent growers. The average proportion of winery-grown fruit across Australia in 2020 was 33 per cent.

The average purchase value for the major varieties generally increased compared with 2019, with particularly large increases for Mount Benson Shiraz (up 22 per cent) and Wrattonbully Pinot Gris (up 41 per cent).

The total value of grapes from the region is estimated to be just under \$90 million.

The total planted area in the Limestone Coast zone is estimated to be 15,846 hectares, based on the Vinehealth Australia vineyard register. The largest GI in the zone is Coonawarra, with an area of 5,846 hectares.

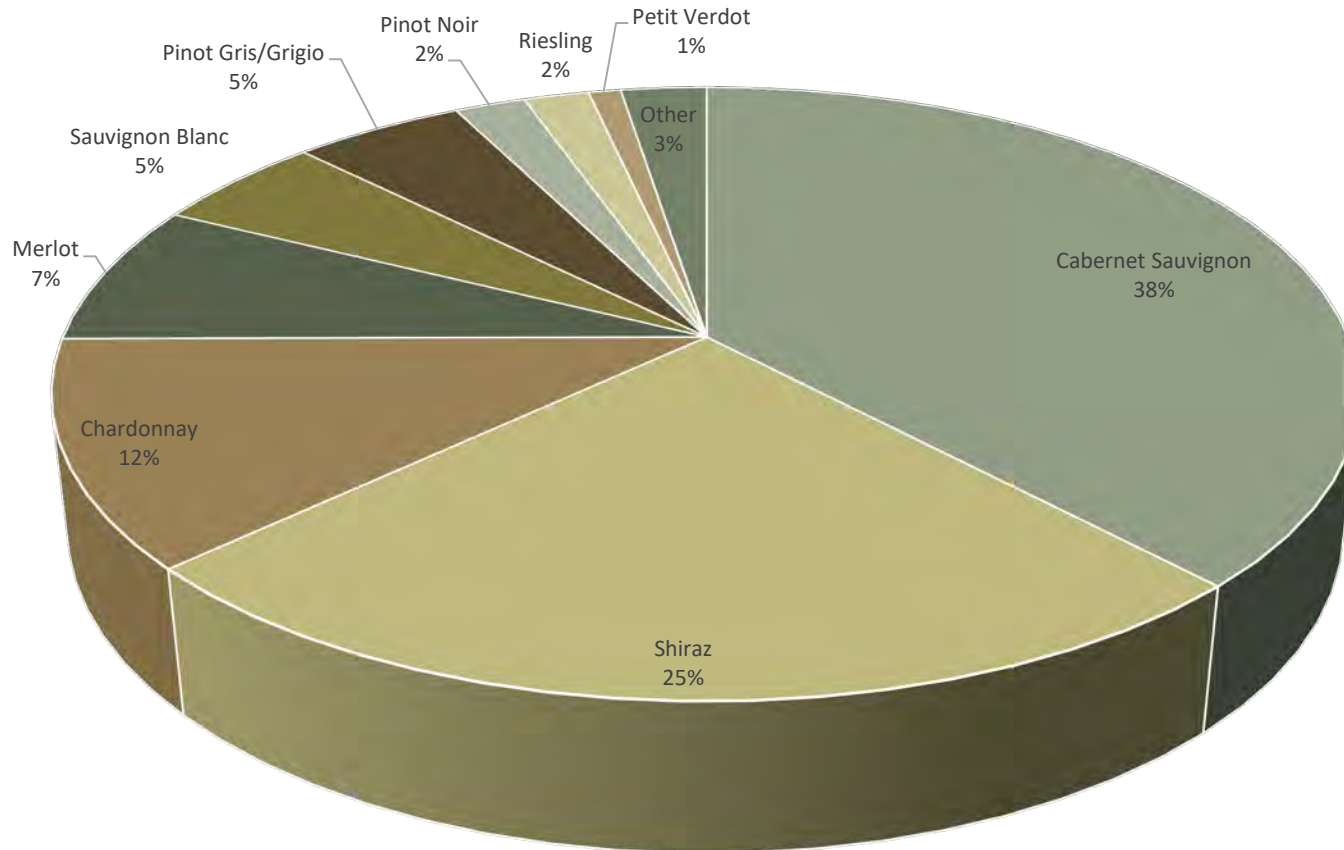
Limestone Coast

Winegrape intake summary table - zone

	Total tonnes purchased	Price dispersion - number of tonnes in each price range					total value purchased grapes	Average purch. value per tonne	Change in price YoY	Winery grown fruit	Share of winery grown	Total crushed	Est total value ALL grapes
		< \$300	\$300 to <\$600	\$600 to <\$1500	\$1500 to <\$2000	\$2000+							
Red													
Barbera	2		278	18	21	4				6	73%	8	\$11,955
Cabernet Franc	28		4	77	81	26	\$35,916	\$1,300	37%	129	82%	157	\$203,834
Cabernet Sauvignon	10,787		7,721	113,630	8,406	6,647	\$17,680,956	\$1,639	11%	14,437	57%	25,224	\$41,343,488
Graciano			4	24	13	10				2	100%	2	\$3,585
Lagrein	2		5	14	11						0%	2	\$2,850
Malbec	173		345	1,123	123	82	\$171,374	\$989	-8%	213	55%	387	\$382,177
Mataro/Mourvedre	65		275	2,228	362	427				125	66%	190	\$142,380
Merlot	1,498		7,112	48,106	728	56	\$1,680,322	\$1,122	14%	3,459	70%	4,957	\$5,560,442
Montepulciano	9		73	96	23	29	\$12,153	\$1,311			0%	9	\$12,153
Nebbiolo	5		1	15	17	14					0%	5	\$13,468
Petit Verdot	138		7,034	3,857	115	23	\$136,379	\$986	32%	495	78%	633	\$623,757
Pinot Meunier				18	61	63				2	100%	2	\$4,871
Pinot Noir	833		8,048	8,682	1,629	3,192	\$980,690	\$1,177	28%	552	40%	1,386	\$1,630,761
Sangiovese	18		325	828	285	35				20	53%	38	\$86,607
Shiraz	6,129		6,565	197,141	11,353	18,411	\$9,032,318	\$1,474	8%	10,508	63%	16,637	\$24,517,848
Tempranillo	12		397	1,057	276	148			-100%	21	64%	33	\$89,391
Other red	37	37	1,755	5,468	94	88	\$33,996	\$924	40%	0	0%	37	\$34,162
Red Total	19,736	39	48,175	396,167	24,633	30,938	\$29,904,559	\$1,515	13%	29,970	60%	49,706	\$74,663,730
White													
Chardonnay	4,238	1,328	164,640	11,704	2,550	2,381	\$3,289,979	\$776	12%	3,667	46%	7,905	\$6,136,745
Gewurztraminer	91		4,613	171	18	3	\$60,246	\$664		61	40%	152	\$101,072
Muscat a petits grains blancs	18	127	12,577	330	14	2					0%	18	\$16,623
Pinot Gris/Grigio	1,908		25,356	6,330	656	353	\$2,063,329	\$1,081	13%	1,438	43%	3,346	\$3,618,160
Prosecco	45		646	5,285	16				-100%		0%	45	\$42,278
Riesling	509		3,029	2,615	1,711	420			-100%	769	60%	1,278	\$1,157,355
Sauvignon Blanc	1,734	25	46,862	9,904	2,165	391	\$1,646,429	\$950	16%	1,654	49%	3,388	\$3,217,422
Semillon	39	847	23,604	3,759	231	7	\$25,748	\$655	16%	331	89%	370	\$242,497
Verdelho	28	79	1,801	560	32	1				103	78%	132	\$53,915
Vermentino		9	364	337	33	15				2	100%	2	\$3,380
Viognier	31	468	2,588	533	157	49				45	60%	76	\$76,320
Other white		234	6,201	71	82	41				16	100%	16	\$26,964
White Total	8,641	10,048	362,028	42,568	7,800	3,699	\$7,647,752	\$885	15%	8,088	48%	16,728	\$14,692,731
Grand Total	28,377	10,086	410,202	438,735	32,433	34,637	\$37,552,310	\$1,323	13%	38,057	57%	66,434	\$89,356,460

Limestone Coast

Share of crush by variety - 2020



Limestone Coast

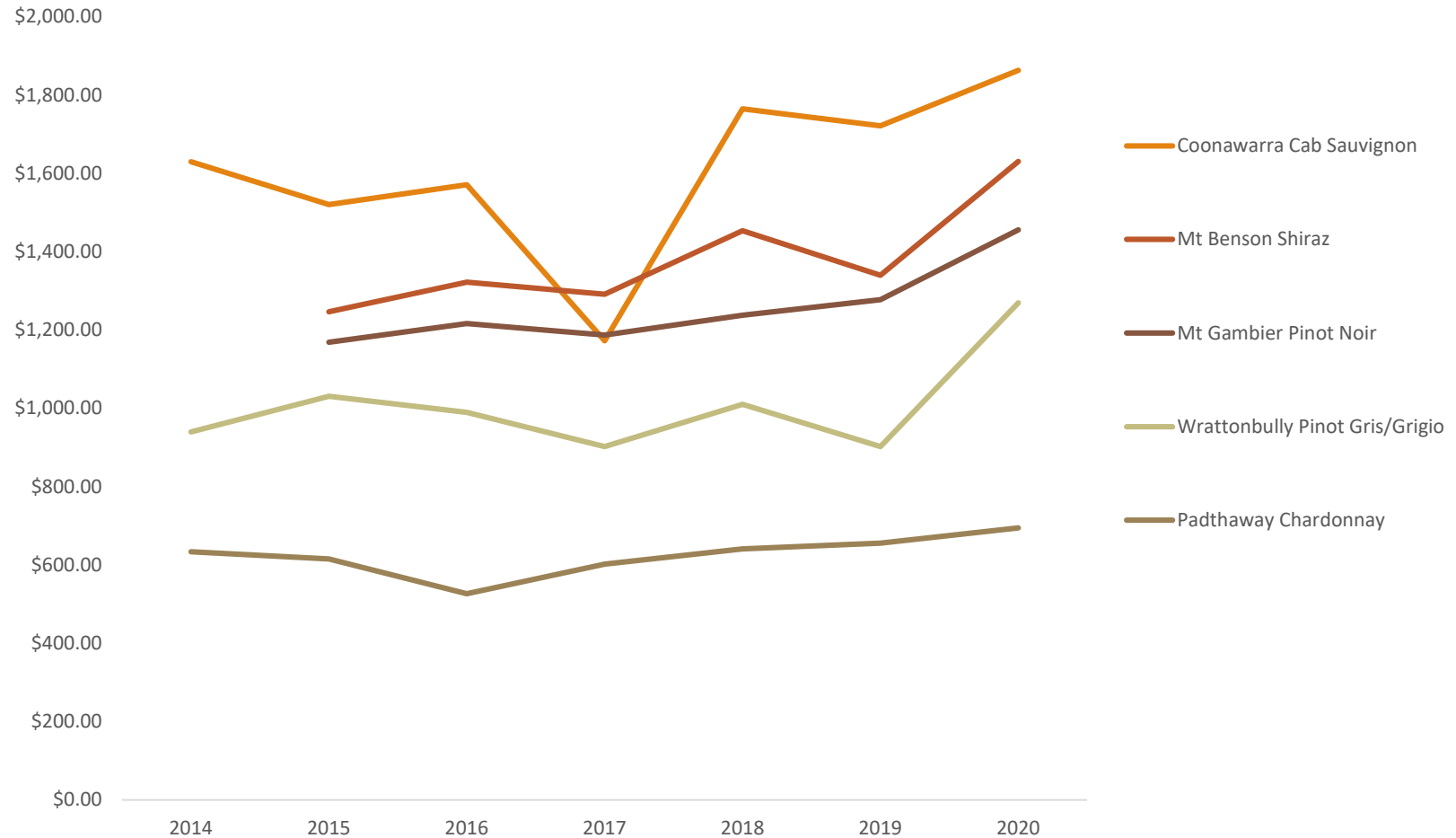
Current plantings by variety and year planted - zone

<i>Variety</i>	<i>Pre-2017</i>	<i>2017</i>	<i>2018</i>	<i>2019</i>	<i>Total area</i>	<i>% planted in 2019</i>
Red winegrapes						
Cabernet Franc	29	1	0	4	34	12%
Cabernet Sauvignon	6762	91	122	357	7332	5%
Malbec	104	0	0	5	109	5%
Merlot	1100	0	0	4	1104	0%
Petit Verdot	60	0	0	0	60	0%
Pinot Noir	319	0	0	11	330	3%
Shiraz	3831	39	50	49	3969	1%
Tempranillo	9	0	0	0	9	0%
Other Red	158	3	2	2	165	1%
Total red varieties	12,372	134	174	432	13,112	3%
White winegrapes						
Chardonnay	1507	0	3	0	1510	0%
Pinot Gris	343	0	0	0	343	0%
Riesling	209	0	0	0	209	0%
Sauvignon Blanc	445	0	0	0	445	0%
Semillon	25	0	0	0	25	0%
Verdelho	19	0	0	0	19	0%
Viognier	19	0	0	0	19	0%
Other White	75	0	2	0	77	0%
Total white varieties	2,642	0	5	0	2,647	0%
Unknown variety	87	0	0	0	87	0%
Total all varieties	15,101	134	179	432	15,846	3%

Source:
Vinehealth
Australia

Limestone Coast

Historical weighted average price for major varieties



Limestone Coast

Winegrape intake summary table - Coonawarra

	Total tonnes purchased	Price dispersion - number of tonnes in each price range					total value purchased grapes	Average purch. value per tonne	Change in price YoY	Winery grown fruit	Share of winery grown	Total crushed	Est total value ALL grapes
		< \$300	\$300 to <\$600	\$600 to <\$1500	\$1500 to <\$2000	\$2000+							
Red													
Barbera									6	100%	6	\$9,816	
Cabernet Franc	19		4	14					51	73%	69	\$99,932	
Cabernet Sauvignon	5,797		465	3,912	1,419	\$10,799,663	\$1,863	8%	8,644	60%	14,441	\$26,904,961	
Malbec	7				7				34	84%	41	\$105,976	
Merlot	540		416	120	4	\$699,369	\$1,296	26%	1,561	74%	2,101	\$2,722,052	
Nebbiolo	5				5					0%	5	\$13,468	
Petit Verdot	58		6	52					291	83%	349	\$489,420	
Pinot Meunier									2	100%	2	\$3,965	
Pinot Noir	86		42	44		\$109,896	\$1,277	35%	127	60%	213	\$271,503	
Shiraz	1,017		349	533	135	\$1,730,271	\$1,701	17%	5,193	84%	6,210	\$10,564,727	
Tempranillo									2	100%	2	\$2,983	
Other red	4		4						0	4%	4	\$3,488	
Red total	7,533		1,288	4,675	1,570	\$13,482,057	\$1,790	14%	15,910	68%	23,443	\$41,192,291	
White													
Chardonnay	397		390	7		\$343,788	\$865	11%	1,024	72%	1,421	\$1,229,452	
Gewurztraminer	1		1						12	92%	13	\$11,250	
Pinot Gris/Grigio	13		13							0%	13	\$13,100	
Riesling									268	100%	268	\$367,739	
Sauvignon Blanc	199		191	8		\$209,294	\$1,052	46%	684	77%	883	\$928,697	
Semillon	22		22						167	89%	189	\$132,398	
Other white									11	100%	11	\$18,864	
White total	632		617	15		\$582,299	\$921	21%	2,165	77%	2,797	\$2,701,501	
Grand total	8,165		1,905	4,690	1,570	\$14,064,356	\$1,723	16%	18,076	69%	26,240	\$43,893,792	

Note: Where there are fewer than three purchasers of a variety, the average price and total value are not reported to protect confidentiality.

Limestone Coast

Current plantings by variety and year planted - Coonawarra

<i>Variety</i>	<i>Pre-2017</i>	<i>2017</i>	<i>2018</i>	<i>2019</i>	<i>Total area</i>	<i>% planted in 2019</i>
Red winegrapes						
Cabernet Franc	21	1	0	4	26	15%
Cabernet Sauvignon	3,534	14	16	207	3,771	5%
Malbec	18	0	0	0	18	0%
Merlot	356	0	0	4	360	1%
Petit Verdot	17	0	0	0	17	0%
Pinot Noir	36	0	0	0	36	0%
Shiraz	1,161	0	6	0	1,167	0%
Other Red	7	3	2	0	12	0%
Total red varieties	5,150	18	24	215	5,407	4%
White winegrapes						
Chardonnay	256	0	3	0	259	0%
Riesling	45	0	0	0	45	0%
Sauvignon Blanc	91	0	0	0	91	0%
Semillon	12	0	0	0	12	0%
Other White	11	0	0	0	11	0%
Total white varieties	415	0	3	0	418	0%
Unknown variety	21	0	0	0	21	0%
Total all varieties	5,586	18	27	215	5,846	4%

Source:
Vinehealth
Australia

Limestone Coast

Winegrape intake summary table - Padthaway

	Total tonnes purchased	Price dispersion - number of tonnes in each price range					total value purchased grapes	Average purch. value per tonne	Change in price YoY	Winery grown fruit	Share of winery grown	Total crushed	Est total value ALL grapes
		< \$300	\$300 to <\$600	\$600 to <\$1500	\$1500 to <\$2000	\$2000+							
Red													
Cabernet Franc	9			9					16	65%	25	\$25,350	
Cabernet Sauvignon	2,226			1,901	297	29	\$2,880,622	\$1,294	1%	1,203	35%	3,430	\$4,437,410
Graciano									2	100%	2	\$3,585	
Lagrein	2				2					0%	2	\$2,850	
Malbec	53			53					146	73%	200	\$207,862	
Merlot	286			286			\$255,593	\$895	12%	335	54%	621	\$555,706
Pinot Meunier									0	100%	0	\$906	
Pinot Noir	483			480	3		\$541,290	\$1,122	32%	41	8%	524	\$587,406
Sangiovese	18					18				0%	18	\$40,342	
Shiraz	2,475			1,669	504	302	\$3,539,941	\$1,430	7%	1,663	40%	4,138	\$5,917,598
Tempranillo	3					3				32%	5	\$11,600	
Red total	5,555			4,398	806	352	\$7,333,026	\$1,320	6%	3,409	38%	8,964	\$11,790,615
White													
Chardonnay	2,820		303	2,517			\$1,957,276	\$694	6%	1,071	28%	3,890	\$2,700,654
Gewurztraminer	87			87					50	37%	137	\$88,940	
Pinot Gris/Grigio	1,314			1,314			\$1,318,995	\$1,004	5%	102	7%	1,416	\$1,421,729
Riesling	497			497					467	48%	963	\$870,282	
Sauvignon Blanc	774			774			\$650,880	\$841	3%	81	9%	855	\$718,966
Verdelho	28		28						103	79%	131	\$52,376	
Vermentino									2	100%	2	\$3,380	
Viognier	31			31					34	53%	65	\$65,110	
Other white									5	100%	5	\$8,100	
White total	5,549		330	5,219			\$4,474,305	\$806	8%	1,915	26%	7,465	\$5,929,538
Grand total	11,104		330	9,617	806	352	\$11,807,331	\$1,063	2%	5,324	32%	16,428	\$17,720,153

Note: Where there are fewer than three purchasers of a variety, the average price and total value are not reported to protect confidentiality.

Limestone Coast

Current plantings by variety and year planted - Padthaway

<i>Variety</i>	<i>Pre-2017</i>	<i>2017</i>	<i>2018</i>	<i>2019</i>	<i>Total area</i>	<i>% planted in 2019</i>
Red winegrapes						
Cabernet Franc	8	0	0	0	8	0%
Cabernet Sauvignon	914	68	67	52	1,101	5%
Malbec	78	0	0	0	78	0%
Merlot	169	0	0	0	169	0%
Pinot Noir	86	0	0	11	97	11%
Shiraz	1,157	31	26	13	1,227	1%
Other Red	10	0	0	0	10	0%
Total red varieties	2,422	99	93	76	2,690	3%
White winegrapes						
Chardonnay	773	0	0	0	773	0%
Pinot Gris	159	0	0	0	159	0%
Riesling	148	0	0	0	148	0%
Sauvignon Blanc	83	0	0	0	83	0%
Verdelho	19	0	0	0	19	0%
Viognier	19	0	0	0	19	0%
Other White	28	0	0	0	28	0%
Total white varieties	1,229	0	0	0	1,229	0%
Unknown variety	40	0	0	0	40	0%
Total all varieties	3,691	99	93	76	3,959	2%

Source:
Vinehealth
Australia

Limestone Coast

Winegrape intake summary table - Wrattenbully

	Total tonnes purchased	Price dispersion - number of tonnes in each price range					total value purchased grapes	Average purch. value per tonne	Change in price YoY	Winery grown fruit	Share of winery grown	Total crushed	Est total value ALL grapes
		< \$300	\$300 to <\$600	\$600 to <\$1500	\$1500 to <\$2000	\$2000+							
Red													
Barbera	2				2					0%	2	\$3,278	
Cabernet Franc									1	100%	1	\$2,191	
Cabernet Sauvignon	1,653			1,047	431	175	\$2,562,944	\$1,550	6%	2,592	61%	4,245	\$6,580,731
Malbec	23			20	3		\$25,910	\$1,125	-1%		0%	23	\$25,910
Merlot	272			167	86	19	\$372,820	\$1,372	23%	653	71%	925	\$1,269,108
Petit Verdot										20	100%	20	\$22,711
Pinot Noir	140			140			\$155,217	\$1,110	7%	224	62%	364	\$404,438
Sangiovese										20	100%	20	\$26,855
Shiraz	1,317			864	285	168	\$2,027,525	\$1,539	9%	1,648	56%	2,965	\$4,564,615
Tempranillo	9					9				2	22%	11	\$30,940
Red total	3,416			2,237	808	371	\$5,171,831	\$1,514	11%	5,161	60%	8,577	\$12,930,776
White													
Chardonnay	710			635		74	\$706,739	\$996	26%	561	44%	1,271	\$1,265,420
Gewurztraminer	3			3							0%	3	\$2,900
Pinot Gris/Grigio	536			456	80		\$680,201	\$1,269	41%	1,317	71%	1,853	\$2,351,584
Prosecco	34			34							0%	34	\$25,830
Riesling	12			12						35	75%	47	\$46,600
Sauvignon Blanc	178			178						352	66%	530	\$425,234
Semillon										46	100%	46	\$43,276
Viognier										11	100%	11	\$15,709
White total	1,473			1,319	80	74	\$1,570,411	\$1,066	39%	2,322	61%	3,795	\$4,176,554
Grand total	4,889			3,556	888	445	\$6,742,242	\$1,379	9%	7,483	60%	12,372	\$17,107,330

Note: Where there are fewer than three purchasers of a variety, the average price and total value are not reported to protect confidentiality.

Limestone Coast

Current plantings by variety and year planted - Wrattenbully

<i>Variety</i>	<i>Pre-2017</i>	<i>2017</i>	<i>2018</i>	<i>2019</i>	<i>Total area</i>	<i>% planted in 2019</i>
Red winegrapes						
Cabernet Sauvignon	1,214	9	0	71	1,294	5%
Malbec	8	0	0	5	13	38%
Merlot	223	0	0	0	223	0%
Pinot Noir	63	0	0	0	63	0%
Shiraz	699	8	11	36	754	5%
Tempranillo	9	0	0	0	9	0%
Other Red	13	0	0	2	15	13%
Total red varieties	2,229	17	11	114	2,371	5%
White winegrapes						
Chardonnay	168	0	0	0	168	0%
Pinot Gris	99	0	0	0	99	0%
Riesling	7	0	0	0	7	0%
Sauvignon Blanc	61	0	0	0	61	0%
Semillon	3	0	0	0	3	0%
Other White	15	0	2	0	17	0%
Total white varieties	353	0	2	0	355	0%
Unknown variety	6	0	0	0	6	0%
Total all varieties	2,588	17	13	114	2,732	4%

Source:
Vinehealth
Australia

Limestone Coast

Winegrape intake summary table – LSC zone other

Incorporating Mount Benson, Mount Gambier, Robe and other areas in the LSC zone outside any GI regions

	Total tonnes purchased	Price dispersion - number of tonnes in each price range					total value purchased grapes	Average purch. value per tonne	Change in price YoY	Winery grown fruit	Share of winery grown	Total crushed	Est total value ALL grapes
		< \$300	\$300 to <\$600	\$600 to <\$1500	\$1500 to <\$2000	\$2000+							
Red													
Cabernet Franc										61	100%	61	\$97,509
Cabernet Sauvignon	1,111			929	142	40	\$1,437,727	\$1,294	19%	1,998	64%	3,109	\$4,022,411
Malbec	90			90					-100%	33	27%	123	\$99,251
Mataro/Mourvedre	65			65						125	66%	190	\$142,380
Merlot	401			401			\$352,540	\$880	0%	909	69%	1,310	\$1,152,268
Montepulciano	9			2	7		\$12,153	\$1,311			0%	9	\$12,153
Petit Verdot	80			80			\$54,365	\$681		184	70%	264	\$179,756
Pinot Noir	125			102	23		\$174,287	\$1,394	20%	160	56%	285	\$397,798
Shiraz	1,320			924	353	42	\$1,734,581	\$1,314	7%	2,004	60%	3,324	\$4,369,066
Tempranillo										15	100%	15	\$24,948
Other red	33			33			\$30,652	\$939			0%	33	\$30,652
Red Total	3,233			2,626	525	82	\$3,917,645	\$1,212	11%	5,490	63%	8,723	\$10,528,190
White													
Chardonnay	311		20	259	32		\$282,176	\$907	16%	1,011	76%	1,323	\$1,199,093
Muscat a petits grains blancs	18			18							0%	18	\$16,623
Pinot Gris/Grigio	45			45			\$51,033	\$1,126	13%	19	29%	64	\$71,999
Prosecco	10				10						0%	10	\$16,448
Riesling													\$0
Sauvignon Blanc	582			582			\$643,325	\$1,105	23%	537	48%	1,120	\$1,236,934
Semillon	18			18					-100%	117	87%	135	\$80,824
Verdelho	1			1							0%	1	\$602
White Total	986		20	923	42		\$1,020,736	\$1,035	20%	1,685	63%	2,671	\$2,622,523
Grand Total	4,220		20	3,550	568	82	\$4,938,381	\$1,170	13%	7,174	63%	11,394	\$13,150,713

Note: Where there are fewer than three purchasers of a variety, the average price and total value are not reported to protect confidentiality.

Limestone Coast

Current plantings by variety and year planted – Mount Benson

<i>Variety</i>	<i>Pre-2017</i>	<i>2017</i>	<i>2018</i>	<i>2019</i>	<i>Total area</i>	<i>% planted in 2019</i>
Red winegrapes						
Cabernet Sauvignon	114	0	0	0	114	0%
Merlot	52	0	0	0	52	0%
Pinot Noir	2	0	0	0	2	0%
Shiraz	171	0	7	0	178	0%
Other Red	4	0	0	0	4	0%
Total red varieties	343	0	7	0	350	0%
White winegrapes						
Chardonnay	34	0	0	0	34	0%
Pinot Gris	43	0	0	0	43	0%
Sauvignon Blanc	66	0	0	0	66	0%
Other White	10	0	0	0	10	0%
Total white varieties	153	0	0	0	153	0%
Total all varieties	496	0	7	0	503	0%

Source:
Vinehealth
Australia

Limestone Coast

Current plantings by variety and year planted – Mount Gambier

<i>Variety</i>	<i>Pre-2017</i>	<i>2017</i>	<i>2018</i>	<i>2019</i>	<i>Total area</i>	<i>% planted in 2019</i>
Red winegrapes						
Cabernet Sauvignon	9	0	0	0	9	0%
Merlot	0	0	0	0	0	0%
Pinot Noir	67	0	0	0	67	0%
Shiraz	0	0	0	0	0	0%
Other Red	0	0	0	0	0	0%
Total red varieties	76	0	0	0	76	0%
White winegrapes						
Chardonnay	40	0	0	0	40	0%
Pinot Gris	14	0	0	0	14	0%
Riesling	5	0	0	0	5	0%
Sauvignon Blanc	95	0	0	0	95	0%
Semillon	1	0	0	0	1	0%
Total white varieties	155	0	0	0	155	0%
Unknown variety	20	0	0	0	20	0%
Total all varieties	251	0	0	0	251	0%

Source:
Vinehealth
Australia

Limestone Coast

Current plantings by variety and year planted – Robe

<i>Variety</i>	<i>Pre-2017</i>	<i>2017</i>	<i>2018</i>	<i>2019</i>	<i>Total area</i>	<i>% planted in 2019</i>
Red winegrapes						
Cabernet Sauvignon	225	0	39	27	291	9%
Merlot	36	0	0	0	36	0%
Pinot Noir	55	0	0	0	55	0%
Shiraz	170	0	0	0	170	0%
Other Red	5	0	0	0	5	0%
Total red varieties	491	0	39	27	557	5%
White winegrapes						
Chardonnay	107	0	0	0	107	0%
Pinot Gris	15	0	0	0	15	0%
Sauvignon Blanc	32	0	0	0	32	0%
Semillon	2	0	0	0	2	0%
Total white varieties	156	0	0	0	156	0%
Total all varieties	647	0	39	27	713	4%

Source:
Vinehealth
Australia

Limestone Coast

Current plantings by variety and year planted – Bordertown

<i>Variety</i>	<i>Pre-2017</i>	<i>2017</i>	<i>2018</i>	<i>2019</i>	<i>Total area</i>	<i>% planted in 2019</i>
Red winegrapes						
Cabernet Sauvignon	415	0	0	0	415	0%
Merlot	219	0	0	0	219	0%
Petit Verdot	43	0	0	0	43	0%
Shiraz	337	0	0	0	337	0%
Other Red	114	0	0	0	114	0%
Total red varieties	1,128	0	0	0	1,128	0%
White winegrapes						
Chardonnay	88	0	0	0	88	0%
Pinot Gris	12	0	0	0	12	0%
Sauvignon Blanc	8	0	0	0	8	0%
Semillon	7	0	0	0	7	0%
Other White	9	0	0	0	9	0%
Total white varieties	124	0	0	0	124	0%
Total all varieties	1,252	0	0	0	1,252	0%

Source:
Vinehealth
Australia

Limestone Coast

Current plantings by variety and year planted – Limestone Coast zone other

<i>Variety</i>	<i>Pre-2017</i>	<i>2017</i>	<i>2018</i>	<i>2019</i>	<i>Total area</i>	<i>% planted in 2019</i>
Red winegrapes						
Cabernet Sauvignon	337	0	0	0	337	0%
Merlot	45	0	0	0	45	0%
Pinot Noir	10	0	0	0	10	0%
Shiraz	136	0	0	0	136	0%
Other Red	5	0	0	0	5	0%
Total red varieties	533	0	0	0	533	0%
White winegrapes						
Chardonnay	41	0	0	0	41	0%
Pinot Gris	1	0	0	0	1	0%
Riesling	4	0	0	0	4	0%
Sauvignon Blanc	9	0	0	0	9	0%
Other White	2	0	0	0	2	0%
Total white varieties	57	0	0	0	57	0%
Total all varieties	590	0	0	0	590	0%

Source:
Vinehealth
Australia

Explanations and definitions

AUSTRALIAN NATIONAL VINTAGE SURVEY

The information for this report has been collected and analysed by Wine Australia as part of the Australian National Vintage Survey 2020. The Limestone Coast zone Summary Report has been prepared by Wine Australia on behalf of the Limestone Coast Wine Region.

Vineyard map

The vineyard boundaries shown in the map were derived from the National Vineyard Scan 2019, conducted on behalf of Wine Australia by Consilium Technology Inc.

Photo credits

Image credit: Wine Australia

Disclaimer

This information has been made available to assist on the understanding that Wine Australia is not rendering professional advice. Wine Australia does not accept responsibility for the results of any actions taken on the basis of the information contained in this report, nor for the accuracy, currency or completeness of any material contained in it. Wine Australia expressly disclaims all and any liability and responsibility to any person in respect of consequences of anything done in respect of reliance, whether wholly or in part, upon this report.

Note: data published in this report supercedes that in earlier reports. Minor variations in reported figures can occur due to data revisions.

Any questions about the report should be directed to:

Wine Australia Market Insights
+618 8228 2000
market.insights@wineaustralia.com



Explanations and definitions - continued

INTAKE (CURRENT VINTAGE) DATA

Definition of regions

Regions have been defined in accordance with Geographical Indication (GI) boundaries.

Total crush

The total crushed is the total tonnes of grapes crushed from a particular source region, whether processed in that region, another region in Victoria or interstate. All wineries in Australia are included in the survey collection process. However, not all wineries respond to the survey - therefore the total tonnage reported may underestimate the true crush. It is estimated that the overall response rate for the survey is 88 per cent; however, individual regions may vary. Generally, regions will have a higher response rate when there is a high proportion of purchased winegrapes within the region.

Reported fruit is separated into fruit produced from the winery's own or associated vineyards ("winery grown") and from independent vineyards ("purchased").

Calculated average purchase value

The survey requests wineries to provide the total amount paid for each parcel of fruit purchased (or the price per tonne). This is the price paid for fruit of a particular variety at the point of receipt – NOT including freight. It includes any penalties or bonuses (eg Baumé) applied at the weighbridge, but DOES NOT INCLUDE other bonuses or adjustments such as end use quality bonuses, which are not available at the time the survey is conducted (May-June 2019).

The calculated average purchase value per tonne is the average amount paid per tonne of fruit across all wineries.

Winery grown grapes are not included in the calculation of average purchase value; nor are grapes grown by companies connected with the winery or under lease arrangements.

Average and total purchase values are not reported where there are fewer than three purchasers of a variety in a particular region. However the values are included in the calculation of totals for each region.

Important note on average purchase value

There is considerable variation in the pricing arrangements made by different wineries. For example, some wineries make adjustment payments based on the average value per tonne reported in this survey and some pay quality bonuses based on the end use of the product. These additional payments are not included in the reported figures. The average price also does not give any indication of the distribution of prices, or variables that go into individual contracts.

Price dispersion data (shaded columns in Intake Summary tables)

All purchases for each variety are grouped into price segments according to the price paid for that batch of fruit. The sum of tonnes in all the price segments may not match the total tonnes purchased where there are tonnes reported without an associated price.

Estimated total value of all grapes

The estimated total value of all grapes is calculated by multiplying the average purchase value per tonne by all tonnes crushed. If there is a variety where there are no purchases, then the average purchase value for the same variety across similar regions, or across all other varieties of the same colour in the same region is used to determine an estimated value for the own grown grapes.